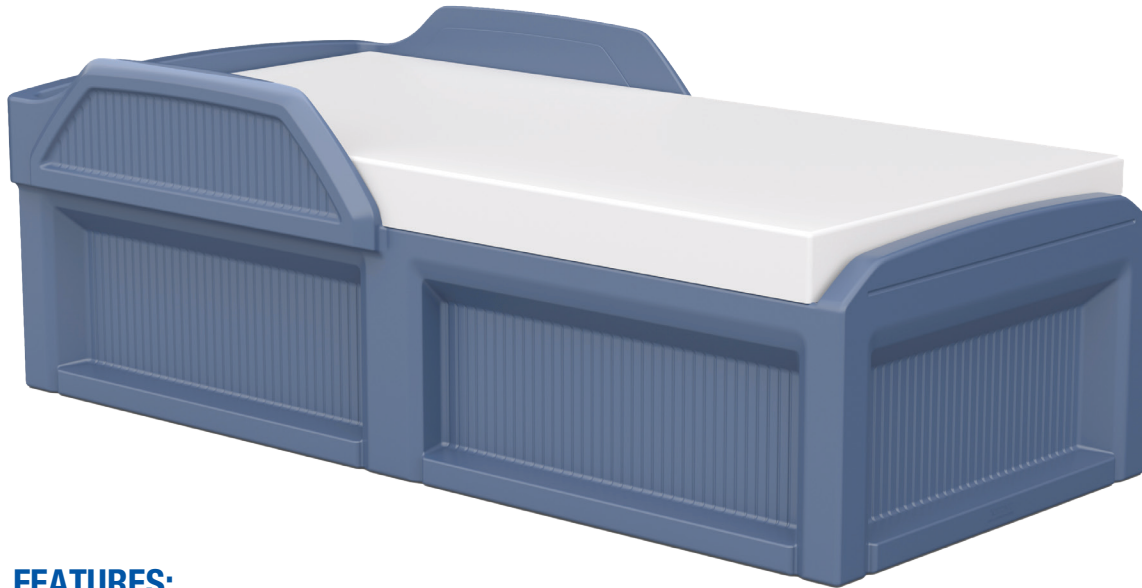


The Solstice Safeguard Bed emulates the therapeutic appearance of our Solstice Bed with added features to support the safety of Fall Risk Patients. Raised, molded-in wall panels run laterally along each side of the bed to help prevent injury by falling. The partial paneling contributes to patient comfort and security without restricting movement entirely.



27H x 80L x 36D

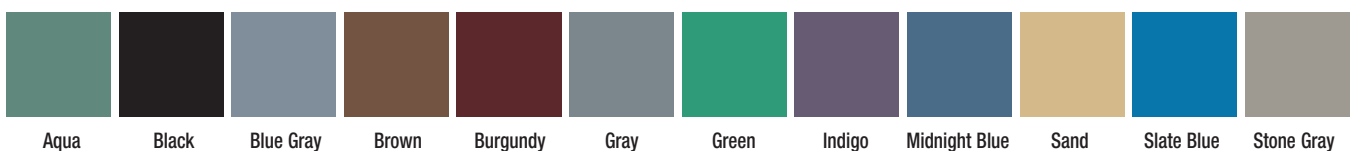
Patent Pending

## FEATURES:

- Durable, one-piece, rotationally molded design for increased strength Constructed of high impact “no break” polyethylene
- Molded-in, raised wall panels run partially along each bedside to reduce the risk of injury by falling
- Designed for use with a **36” x 75”** mattress. Mattresses *sold separately*
- Optional underside ballast doors to add weight with sandbags  
*\*loose sand not recommended*
- Option to bolt to the floor via concealed pilot holes and hardware of your choice
- Easy to clean, sanitize, and maintain
- GREENGUARD Gold Certified
- Flame Retardant (passes Cal 133). Test reports available upon request
- Manufactured to ISO Quality Standards in the USA 

ITEM	COLOR
101AQ	Aqua
101BK	Black
101BG	Blue Gray
101BN	Brown
101BY	Burgundy
101GY	Gray
101GN	Green
101IG	Indigo
101MB	Midnight Blue
101SD	Sand
101SB	Slate Blue
101SG	Stone Gray

Available in



Custom colors available upon request. Call Cortech for details.

Our Intense Use Products Contribute to a Safe and Humane Environment.

### OVERVIEW

The Solstice Safeguard Bed is rotationally molded as a single unit without seams or cracks. It is designed for continuous use in intensive environments. **Manufactured to ISO Quality Standards in the USA.**

**No shelves or storage. Designed for use with 36" x 75" mattress.**

### FABRICATION/MATERIAL

Durable, one piece, rotationally molded design for increased strength. Constructed of high impact polyethylene. No steel or wood components. Flame Retardant (as shown passes Cal 133). Test reports available upon request.

**COLOR** Aqua, Black, Blue Gray, Brown, Burgundy, Gray, Green, Indigo, Midnight Blue, Sand, Slate Blue and Stone Gray. Custom colors available upon request.

**WEIGHT** 150 lbs.

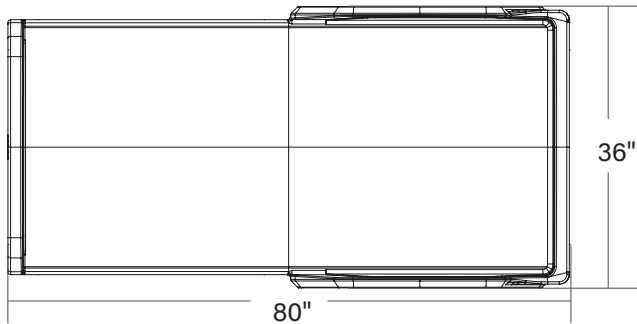
**OPTIONS** Ballast doors. Hardware bit size: T27.

**ASSEMBLY** Bolt to the floor via concealed pilot holes with hardware of your choice.

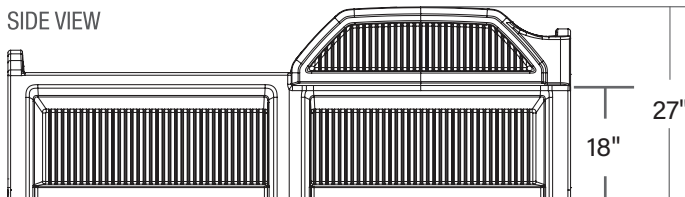
**WARRANTY** 10 Year Factory Warranty.

**MAINTENANCE** Easy to clean, sanitize & maintain.

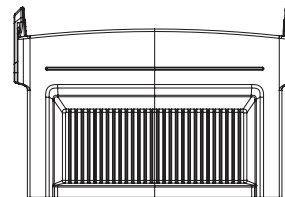
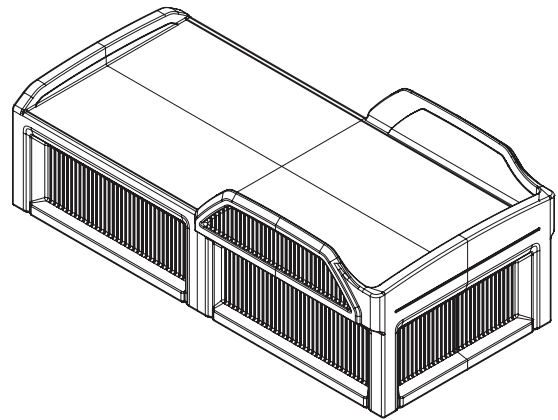
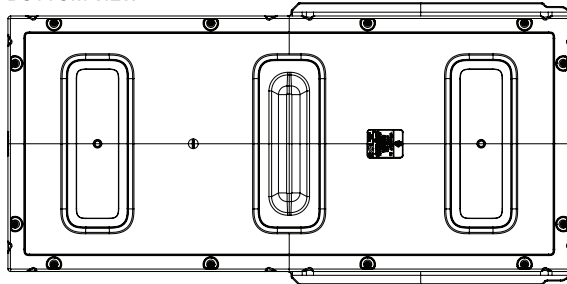
TOP VIEW



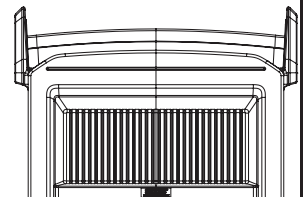
SIDE VIEW



BOTTOM VIEW



BACK VIEW



FRONT VIEW