

household gadgets

key holders and turners

Hole-in-One key holder

- provides several gripping positions and excellent leverage
- can be used with fingers inserted through hollow center or around outside
- has loop for wrist strap, key chain, key ring or to hang on hook



key turner for one key

- handle has 2 finger holes for control
- improves grip and turning leverage
- key is secured to turner with binding post
- neon yellow for visibility



60-0100 key holder, 5" long 7.75 60-0101 key turner 6.50

key holder for two or four keys

- rigid handle provides extra leverage to turn key in lock
- keys fold into plastic holder when not in use
- 3½"L x 1"W



60-0102 two keys 8.50
60-0103 four keys 15.00

electric light switches

Big Lamp Switch

- easy to see, grip and turn
- 2" diameter, three-spoked knob creates more leverage to turn switches on and off
- unscrew and remove the original knob and replace with Big Lamp Switch



60-1100 Big Lamp Switch 8.25
60-1100-3 set of 3 22.50

extension handle

- provides 12" extension to any switch
- puts wall switches within easy reach of children, wheelchair users or people with limited reach
- hardware included



60-1101 handle, 2 each 8.50

plug puller

- attaches permanently to plugs
- two large finger holes make it easy to hold and manipulate
- secure with supplied plastic ties



60-1102 plug puller 6.75

door grippers

door knob extension

- 5" extension handle provides extra leverage
- fits over standard door knob
- allows complete access to keyholes
- cord can be inserted through handle slot for people with limited reach



60-1110 extender, 2 each 20.00

T-handle turner

- can be used on any non-round or ribbed knob or appliance handle
- grip is secured when pressed onto knob
- measures 2¼" diameter but can grip larger irregular-shaped knobs
- T-shaped handle is 5¼" long



60-1113 knob turner 22.50

door knob gripper

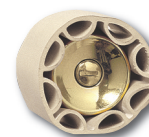
- stretch over door knob to produce a soft ribbed surface
- reduces strength required to open a door
- can use on faucets



60-1112 door knob gripper 22.50

door knob / faucet gripper

- inner ribs grip knob
- outer surfaces allow hand to turn knob
- installed by slipping device over knob



60-1111 gripper, 2 each 12.50

jar / bottle openers

easy twist jar opener

- select the appropriate opening size, grip firmly and twist
- soft rubber gasket creates a firm grip

60-0000 easy twist 10.00



Penguin-Pop jar opener

- jar and bottle opener fits lids and caps small and large
- place around the jar or bottle top, hold firm and turn

60-0001 Penguin-Pop jar opener 5.00



Hot Hand® hand protector/ jar opener

- slip thumb and fingers into pocket
- use as a gripper to unscrew tight jars
- secure grip on hot, cold or slippery items

60-0020 Hot Hand® 12.50



4-way opener

- soft, comfortable non-slip grips
- opens bottle caps, jar lids, soda cans

60-0002 4-way opener 7.50

